



ds Production

3D Scanner for continuous operation



3D-SCANNER FOR EAR CANAL CASTINGS | PRODUCTIVE CONTINUOUS USE |
OPEN OUTPUT FORMATS | NO LICENSE FEES | EASY-TO-USE | EXTREMELY FAST |
PRECISE | VARIOUS INTERFACES

www.smartoptics.de

ds Production

ds Production – THE FAST 3D SCANNER FOR THE PROFESSIONAL PRODUCTION.

Easy way to generate high specific 3D files of ear canal castings.

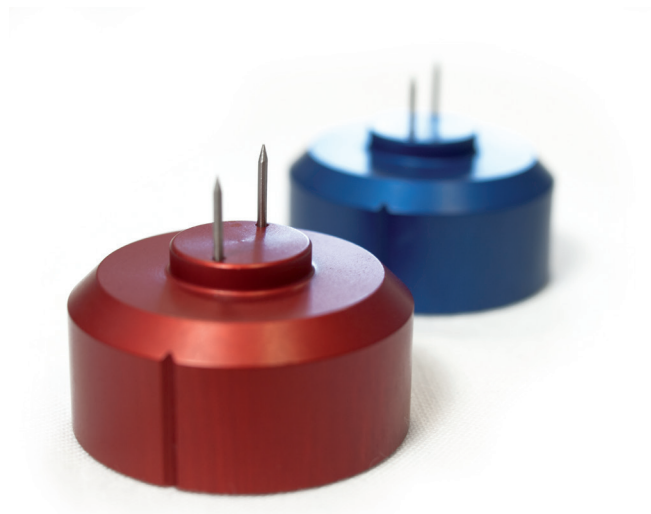
The basis of digital production of customized ear molds is the digitalization of audiological canal castings. Quickly two canal castings are recorded simultaneously. Compact in size, comfortable in using and singular in precision, the dsProduction scanner is the ideal part of any innovative production chain.

Open standard output formats such as STL, ASCII, or MSH are the connection to industrial manufacturing partners or to the own manufacturing chain practical.

ds Production is distinguishable by a sturdy metal case and an ergonomic and solid sliding door. Due to the fact of extremely fast scanning and calculation times and reliable system components it is a professional, essential working equipment in the digital workflow.

Two pairs of removable casting trays for quick changes of metrics minimize the time required.

The use of high quality components and manufacturing made in Germany guarantee the investment safety of ds Production Scanners.





SUMMARY OF BENEFITS

- No annually license fees or other costs, e.g. fee-per-scan-charges
 - No encoded data file, therefore open for many CAD solutions
 - Precisely and very fast for an excellent fitting
 - Increasing the productivity
 - Saving time because of simultaneous scanning of two canal castings
 - Compact and robust construction and attractive design allows the use in any environment
 - Easy installation
 - Reliable and maintenance-free, continuous operation by using high quality and long-lasting components
 - Very short setting-in-period by easy and intuitive appliance
 - Unique price-performance ratio
-

TECHNICAL SPECIFICATIONS

| | ds Production |
|---|--|
| Scanning time (binaural) | 60 – 70 sec. (with recommended computer) |
| Number of castings per scanning procedure | 2 |
| Output data format | STL, ASCII, MSH |
| Technology | Structured-light scanner with durable high-performance LED |
| Resolution of scan data | Adjustable |
| Interface | USB |
| Connection voltage and power consumption | 100 – 240 V AC 50 / 60 Hz, max. 30 W |
| Dimensions | 300 x 340 x 155 mm (W x L x H) |
| Weight | 10 kg |
| Warranty | 24 months |
| Scope of delivery | Scanner, power cord, USB cable, operating software with calibration data and operating manual, two pair of colored object holder |

SYSTEM REQUIREMENTS

| Minimum | Recommended |
|------------------------------------|--|
| Windows 7 | Windows 7 / Windows 8.1 |
| Single or dual-core CPU | Quad-core CPU, i5/ i7 |
| 2 GB RAM | 4 GB RAM |
| USB 2.0 port | USB 2.0 port / USB 3.0 Port |
| Approx. 40 GB free hard-disk space | Approx. 40 – 100 GB free hard-disk space |
| Graphics card minimum 256 MB RAM | Graphics card 512MB RAM |



smart optics Sensortechnik GmbH
 Lise-Meitner-Allee 10 | 44801 Bochum, Germany
 Phone + 49 234 / 29 828-0 | Fax + 49 234 / 29 828-20
 E-mail: info@smartoptics.de | www.smartoptics.de

